

national
museum
of the
château
de PAU

HM HM HM HM HM
press file
HM HM HM HM HM



contact

Virginie Arbouin

Telephone: +33 (0)5 59 82 38 25

virginie.arbouin@culture.gouv.fr

www.museum-chateau-pau.fr



I – A brief history

- A listed building and a national museum
- Henri IV, King of France and Navarre
- Museum, collections
- Historic gardens and park

II – The château de Pau today

- Restoration work on the château
- Some figures for the museum
- Welcoming the public
- Research
- Scientific distribution
- Sponsorship
- Museum partners
- Société des Amis du château de Pau
- Société Henri IV

III – A services offer

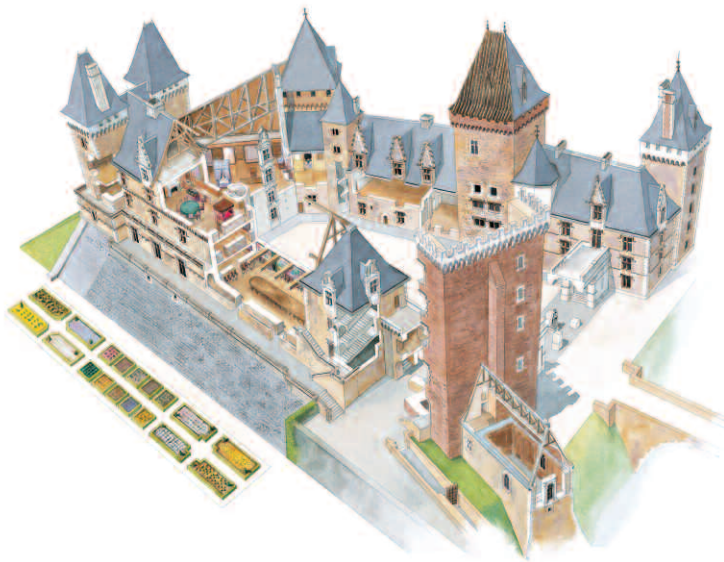
- Private use of areas
- Privilege visits
- A visit to suit each type of visitor
- The bookshop and boutique
- Online resources
- Useful information
- Contacts





A brief
HISTORY





A listed building and a national museum

Located in the heart of South-West France, between Bordeaux and Toulouse, and not far from the Spanish border, this successively seigneurial, royal, and imperial palace is now a national museum that welcomes over 100,000 visitors each year.

Its long, rich history can still be seen in its surprising architecture, with its combination of mediaeval, Renaissance and romantic legacies.

The château consists of three wings forming a triangle around a majestic main courtyard, set in a big property made up of gardens and a wooded park, the remains of the magnificent estate built up by the Albret family in the sixteenth century.

The birth of the future King Henri IV in the château, on 13 December 1553, is recalled by the presence of his legendary cradle, a turtle shell. This dynastic event is a key element in the history of the monument.

Renovated and redecorated in the nineteenth century as a tribute to his distant ancestor by King Louis-Philippe, the château features a full decorative scheme dating from the July Monarchy. Inserted in the gilded wood panelling, about sixty tapestries, mainly from the seventeenth and eighteenth centuries (out of a total of ninety or so in the museum) further enhance the splendour of the royal decor. This historic home, on which the Second Empire in turn left its architectural mark, became a national palace in 1870, and then a national museum in 1927.

The objects on display for visitors in the Royal Apartments are further enriched by fine collections built up mainly around the history of Henri IV, the legends attached to him and the iconography centred on him.

Thus the national museum of the château de Pau houses a unique artistic heritage on a splendid architectural and natural site, making it an ideal spot for studying the iconography and the political and religious history of the sixteenth century.

A brief
HISTORY



Henri IV, king of France and Navarre

CHILDHOOD

The future Henri IV was born in Pau during the night of 12 to 13 December 1553. He was brought up in the Béarn until the age of eight, and then he joined his father at the court of France, where he shared the education and games of the children in the royal family. A few years later, on returning to his native regions of Gascony, Béarn and Navarre, he joined the Protestant movement.



A BLOODIED WEDDING

His wedding to Marguerite de Valois, the sister of the King of France, celebrated in Paris on 18 August 1572, was plunged into mourning by the death of his mother, Jeanne d'Albret. Just a week later, on 24 August the Saint-Bartholomew's day massacres forced Henri de Navarre to convert to Catholicism.

Then, after spending four years at the court of France, he managed to escape and went back to his estates. He returned to the Protestant faith and took over the leadership of the Protestant party.

CONQUEST OF THE KINGDOM

In 1584, when the last brother of King Henri III died, Henri de Navarre became heir to the throne of France. The assassination of Henri III on 1 August 1589 made Henri king of France: he took the name of Henri IV. But he still had to conquer his kingdom by force of arms. He won military victories (Arques in 1589, and Ivry in 1590 are among the most famous), recanted Protestantism in 1593, and was crowned in Chartres in February 1594; he finally entered Paris the following month.

It took him another four years to restore peace and order inside and outside the kingdom, by signing the Edict of Nantes and the Vervins peace treaty in 1598.

WISE GOVERNMENT

By restoring royal authority, reviving the economy, recognizing the existence of Protestants, and carrying out intense diplomatic activities, Henri IV implemented policies that helped to restore the Kingdom of France to a pre-eminent position in seventeenth-century Europe.

He obtained the annulment of his marriage to Marguerite de Valois in 1599, and in the following year, he married Marie de Medici. He was assassinated by Ravailiac on 14 May 1610.

Henri IV was a man of action with real bravery, a statesman with the interests of the throne at heart, with outward simplicity, and with a taste for laughs and jokes, but also a protector of the arts (he had a passion for building); although he was initially contested by a considerable number of his contemporaries, he was to become the most popular among the kings of France after his death.

A brief
HISTORY



Museum, collections

THE ROYAL APARTMENTS

Louis-Philippe was deeply attached to celebrating historical memories of France, and he set out to include the château de Pau, with its links to memories of Henri IV, in a large-scale artistic programme designed to play a major part in confirming his political legitimacy.

The main suppliers of the Crown thus designed and made furniture for the palace in the neo-Gothic and neo-Renaissance style in vogue at the time, creating the decor (still intact) of a royal residence under the July Monarchy.

Specially selected from the finest hangings kept in the royal storehouse to complete the decor, the tapestries on display in the château de Pau constitute, by their number and their quality, one of the finest collections in France.

Completed by the Emperor Napoleon III, these apartments, covering a surface area of 1,750 sq. m on the three floors of the south and west wings, constitute a suite of staterooms that provide impressive proof of the fine quality in the decorative arts during the first half of the nineteenth century.

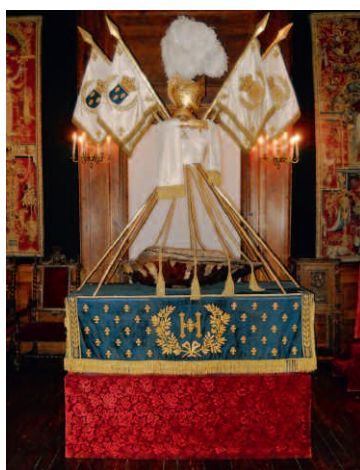
HENRI IV, HISTORY AND LEGEND

The extraordinary destiny of Henri IV, his role as a peacemaker, and his very character, regal and yet full of affability, are the stuff of legend. Even during his life, his feats of arms, his loves, and his witty remarks were widely commented. The legend of "good King Henri" culminated in the eighteenth century in literature and the arts.

Throughout that century, artists and engravers also helped to spread the image of a heroic, jovial king who went down in history as a fine figure. One of the key elements of the legend is the turtle shell that is supposed to have been used as a cradle for Henri de Navarre as a baby. This impressive object was all bit worshipped in the capital of the Béarn, from the second half of the eighteenth century on.

After the torments of the French Revolution, the legitimist propaganda re-appropriated the figure of Henri IV. In paintings, what was known as the "troubadour" trend gives pride of place to representations of historic scenes in which the picturesque dominates. Henri IV was one of the favourite subjects for the artists painting in that style.

The signs of that special status in the Country's affection, works of art, paintings, sculptures, coins and medals, drawings and engravings, old books, lampoons, pamphlets, manuscripts and autographs, constitute an irreplaceable fount of knowledge on the history of the sixteenth century, and also on the construction and the political use of a fully-fledged national myth, up to the present day.



A brief
HISTORY

Historic gardens and park



The château de Pau is on a national estate featuring gardens and a park, which represent the remnants of the exceptional estate built up by the Albret family in the sixteenth century.

There was almost certainly a small garden of medicinal plants within the walls of the mediaeval castle, near the farmyard, but the first confirmed mention only dates back to 1418, when sire de Caumont described, at the foot of the walled bank of the château de Pau, "a fine garden containing a lovely fountain".

It was during the Renaissance that the gardens took on a size that led a student from La Rochelle travelling through Pau in 1598 to state that it was the "finest gardenings in Europe". The estate of the château de Pau reached its zenith under the impetus of the sovereigns of Navarre, the parents and grandparents of Henri IV, with a garden, a rabbit warren, an orchard, a chestnut grove, a small park around the elegant Castet Beziat, a large park and a vineyard. Sand paths furnished with benches, arbours, galleries and pavilions enabled strollers to wander through the estate and sit down in comfort to admire its wonders, with box trees in one spot clipped into the shapes of a ship and the whale about to swallow Jonah, and elsewhere the irrigation channels for the orchard providing rich fish reserves.

After Henri IV became King of France, he remained especially fond of his gardens in Pau; he regularly asked for news about them and had plans and pictures done of them. The King even had saplings sent from Pau to plant trees in his gardens in Paris. Although the château gardens were still tended regularly after his death in 1610, the eighteenth century saw the end of their splendour: the town of Pau was growing, and the large-scale urban development projects (roads, squares, cemetery), together with tree felling work, gradually ate into the royal estate. Saved from a complete break-up during the French Revolution, the château park was redesigned in the romantic taste, and in the mid-nineteenth century it became a favourite spot for strolls among the people living in Pau and the many foreigners spending the winter in Pau.



the château de Pau

T O D A Y



Restoration work on the château



THE BUILDING

Restoration work on the fabric of the building was begun in 1995, and it is now almost finished.

After work to restore the trusses, the roofing of the château and its outbuildings has been replaced.

The façades and the terraces have been treated to make the building waterproof again. The rendering has been redone, the trompe l'oeil false joints have been re-pointed, and the balustrades on the terraces and the carved stonework have been restored to their former glory. Renovation of the impressive brick keep, dating from the end of the fourteenth century, was completed in 2011.

A considerable amount of renovation work was carried out in the rooms at the same time, with new museum layouts designed to present collections linked to the history of Henri IV and the legends surrounding him. Special care was taken concerning the storage areas and the packing and safety aspects for the works kept there.

THE PARK AND THE GARDENS

The park and the gardens were by no means neglected. In the twentieth century, indeed, a lack of management and natural ageing of the trees made restoration work necessary; it was begun in the 1990s.

After creation of the "allée Madame" in memory of Catherine de Bourbon, the sister of Henri IV who managed his Estates until 1592, and restoration of the "Basse-Plante", which was completed in 2002, several felling campaigns were carried out in the park to remove diseased trees and trees representing hazards for the public.

Several thousand saplings have been planted there to reconstitute the forestry heritage of the château woods and add to them by introducing some species occurring naturally in the forests of the Béarn.

The paths and clumps of box are being regenerated, damage to the most eroded slopes has been stopped by replanting vegetation, and the Renaissance garden on the south terrace is being renewed over the seasons, in accordance with the museum programme. For example, in 2010 a Tuscan garden of potted shrubs was created in homage to the alliance formed by Henri IV with the Medici family and the city of Florence. In 2011, the restoration work was capped by putting up fences and grilles with contemporary patterns.

Some figures for the museum



DISTANCES

Pau-Paris: 800 km
Pau-Bordeaux: 190 km
Pau-Toulouse: 190 km
Pau-Saragossa: 250 km
Pau-Spanish border: 45 km

SURFACE AREAS

Surface area of the estate: 22 hectares
Surface area covered by the main building: 2,300 sq. m
Surface area of the main courtyard: 850 sq. m
Surface area open to the public: 1,750 sq. m
Surface areas for temporary exhibitions: 150 sq. m
Storage space: 500 sq. m

VISITORS

Visitors to the museum in 2010

Total number of visitors: 118,191

Visitor profile in 2010

GEOGRAPHICAL ORIGIN:

- 84% of the visitors were French, including
 - 27% of visitors from the Aquitaine region, and
 - 10% of visitors from the Midi-Pyrénées region.
- 16% of the visitors were from other countries, including
 - 7% of visitors from Spain,
 - 2% of visitors from Great Britain,and during the summer period, a sharp increase in the numbers of visitors from Italy, Germany or Belgium. In all, more than 96 nationalities are represented among the visitors to the château.



Welcoming the public



The national museum of the château de Pau is visited by people living in the area and tourists, who form the majority during the summer season (from May to September) and during the winter and spring school holidays.

A WIDE-RANGING OFFER

The general guided visit, in French, (and in Spanish and English for groups) remains the basis of our offer for visitors. It enables us to personalize the procedure enabling visitors to find out about a heritage and a history that call for a teaching approach and sharing of experience. Nonetheless, the museum's cultural offer has been widened to suit the expectations of the various types of visitors.

A rich programme of temporary exhibitions, conferences by guest speakers, meetings, symposiums, seminars, concerts, and a wide range of special events, is aimed at children and adults, individuals and families, specialists and amateurs alike.

ARTISTIC AND CULTURAL EDUCATION

The National museum of the château de Pau takes part, alongside the French ministry of Education, in actions of artistic and cultural education carried out for children and teenagers in primary and secondary schools: a rich resource for teaching the history of art, the museum helps to train teachers under the schemes set up in the field; it enables young people to discover works in the cultural heritage and works by living artists, and it helps to add a cultural dimension to the professional training courses.

CULTURE AND SOLIDARITY

With the partner associations, we constantly endeavour to seek the best ways of approaching our heritage and collections to enhance meetings, exchanges and transmission of knowledge between visitors at different levels and with different cultural backgrounds (social mixing) or between parents and children outside school hours (mixing between generations, popular education networks).

The actions carried out in the social field by the museum's departments since 1998 have given it a nationwide reputation.

Suitable visiting solutions are also being applied on an experimental basis for disabled people: the visually or mentally impaired, and people with reduced mobility.

Lastly, proposals have been put forward to welcome pre-school children and people from retirement homes.

contact

Information and bookings:

Olivier Pouvreau
and **Alain Gouillardou**,
visitors' department

Tel.: +33 (0)5 59 82 38 02/07

Fax: +33 (0)5 59 82 38 18

olivier.pouvreau@culture.gouv.fr
alain.gouillardou@culture.gouv.fr

Reception of visitors
with impairments:

Grégory Morillon
and **Alain Béringuet**

Tel. +33 (0)5 59 82 38 11

gregory.morillon@culture.gouv.fr
alain.beringuet@culture.gouv.fr

the château de Pau
T O D A Y

Research

THE SYSTEM

The château de Pau sees regular collaboration between the worlds of higher education, research and museums. These joint efforts translate into organizing symposiums and one-day study sessions, editing publications, welcoming specialized researchers, bringing research groups together, etc. They are governed in particular by agreements concluded between the museum and several universities, under general contracts or for specific types of collaboration. A scientific distribution activity is also linked to digitization of the collections and development of online scientific tools (cataloguing, virtual exhibitions, local and national databanks, etc.).

ORIENTATIONS AND THEMES

The current set-up is mainly based on the activities of the Jacques de Laprade Centre, set up in 1990 and given over in particular to image themes and representations in politics (literature, historiography, and graphic arts in the sixteenth and seventeenth centuries). Closely linked to the museum's collections of books and engravings, it has been designed as an area of dialogue and collaboration with specialized researchers, at the confluence of the history of literature, the history of art, iconography and the graphic arts, especially concerning the late sixteenth century and the period around the year 1600. Other actions in support of research cover Mediaeval literature, which is the object of regular meetings, and studies of historical scenery, in a partnership context bringing together in particular the territorial authorities and the heritage departments of the regional directorate for cultural affairs (DRAC), with a view to drawing up modern, cross-border documentation centred mainly on the Pyrenees area. Lastly, since 2011, the museum has set up a programme of regular meetings on the history of tapestry.

A NETWORK OF SKILLS

A far-reaching network of intellectual collaboration (Société française des seiziémistes, Société de l'histoire du protestantisme français, Société d'histoire religieuse de la France, Voltaire Foundation – Oxford, Fondation Taylor – Paris, etc.) provides specialized backing for all the actions undertaken; the regular participation of the territorial authorities in their organization is completed by that of the Société Henri IV, set up in 1993. Every six months, the society publishes a letter containing a wealth of information on Henri IV, and it posts specialized information on its site. Under the auspices of the head of the establishment, a Research mission places its skills and resources at the disposal of the policy.

ACTIVITIES

- Organization of one or more symposiums a year, together with meetings, one-day study sessions or seminars,
- Welcoming researchers specialized in the fields of political literature, historiography and iconography,
- Teaching activities opening out onto research,
- Active policy on exhibitions.



contact

Paul Mironneau,
curator general
of the heritage, director
Secretariat:
Tel.: +33(0) 5 59 82 38 12
Fax: +33(0) 5 59 82 38 18
paul.mironneau@culture.gouv.fr

the château de Pau
T O D A Y

Scientific distribution

INTERNATIONAL PROSPECTS

The research activities give rise to a certain number of publications in several types of works: symposium documents and joint thematic volumes (*Les Entrées, gloire et déclin d'un cérémonial*, 1997, *Autour de l'enfance*, 1999); some of these works are published in outside scientific collections, such as:

- *Paix des armes, paix des âmes*, a symposium to commemorate the Edict of Nantes (1998, Imprimerie nationale)
- *Ambroise Paré: écriture et pratique de la science à la Renaissance* (2003, Champion)
- *Jeanne d'Albret et sa cour* (2002, Champion)
- *Voltaire, La Henriade et l'histoire* (2002, Société des études voltairiennes, *Revue Voltaire*)
- *Figures de l'histoire de France dans le théâtre au tournant des Lumières 1760-1830* (2007, *Studies on Voltaire and the Eighteenth Century*)
- *Froissart à la cour de Béarn: l'écrivain, les arts et le pouvoir*, (2009, ed. Brepols)
- *Régicides en Europe, XVI^e-XIX^e siècles* (to be published in 2012)

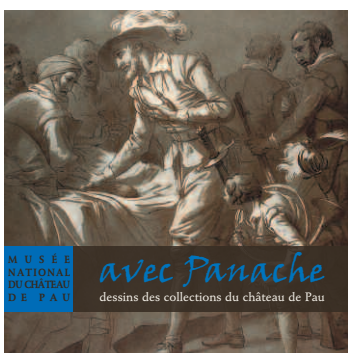
A THEMATIC COLLECTION

A thematic collection, organized around the discovery of an artistic technique linked to a historical or literary theme, was begun in 2005, with the *Petits Cahiers du château de Pau*, published by the Réunion des musées nationaux and drawn up and printed by the museum. The first issue: *Jean de la Fontaine, toiles imprimées*, 2005 was given over to the printed fabrics of the eighteenth and nineteenth centuries, while the second: *Avec Panache*, 2007 covered the backgrounds of drawings of the château de Pau, and the third issue on *Le Portrait gravé (1550-1620)*, was published in 2009.

ONLINE DISTRIBUTION AND PUBLICATIONS

A new type of publication was brought out in 2007 among the site's scientific resources, thanks to the added value provided by the NICTs. The main works in the media are:

- *An online descriptive catalogue of the drawings in the national museum of the château de Pau*, published by the Réunion des musées nationaux. It constitutes a major event in terms of scientific distribution (10,469 visitors between November 2010 and October 2011)
- *Designing and posting virtual exhibitions* grouped on a site resulting from a partnership between the Aquitaine regional council and the establishment
- *Making various scientific resources available on the museum's Web site* (including the latest news on research concerning Henri IV and numerous bibliographical or iconographical elements)
- *Providing material for the databases of the French ministry of culture and the Pyrenas and BNSA sites*
- *Preparation of the online catalogue covering the museum's paintings* (planned for 2012-2013).



contact

Paul Mironneau,
curator general
of the heritage, director
Secretariat:
Tel.: +33(0) 5 59 82 38 12
Fax: +33(0) 5 59 82 38 18
paul.mironneau@culture.gouv.fr

the château de Pau
TODAY

Sponsorship

PROJECTS

Year after year, the French State invests in restoration and improvements on a major national historical site. Nonetheless, the museum also calls on business sponsorship to execute many projects, letting the sponsors select the project that suits them best. With widely varying budgets, they are thus able to make their contributions to the efforts to safeguard and highlight the heritage in various fields: cultural media coverage, acquisitions or restorations of works, publications, and exhibitions.



RETURNS

By becoming a sponsor of the national museum, firms can:

- Associate a company name with that of a recognized cultural establishment that is well known in its regional environment,
- Benefit from a media impact at a national level,
- Link up with growing numbers of international visitors (over 100,000 visitors per year), mainly French, but also Spanish and English-speaking,
- Gain advantages from their involvement in terms of image and communication, together with returns that can be put to good use,
- Lastly, benefit from the fiscal provisions of the French law dated 1 August 2003 on enhancement of sponsorship.



SPONSORSHIP

In this framework, firms can benefit from returns estimated at a value equivalent to the amount of their participation and make savings of 33% on their investments through tax deductions applicable to operating expenses.

OUR SPONSORS

- Fondation TOTAL
- TOTAL
- MACIF
- Société des Amis du château de Pau
- Société Henri IV
- Caisse des Dépôts de la Région Aquitaine
- CCI de Pau
- The CEF Company
- The Atelier du peintre décors Company
- The Gunnebo Company
- The Havells Sylvania Company

contact

Cécile Latour,
general secretary

Tel. : +33 (0)5 59 82 38 14

Fax : +33 (0)5 59 82 38 18

cecile.latour@culture.gouv.fr

the château de Pau
T O D A Y

Museum partners

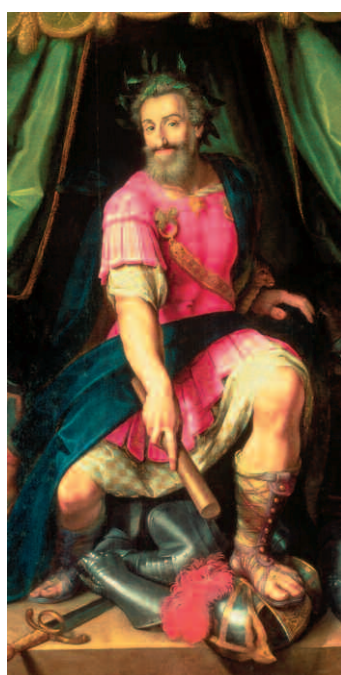


The activities of the national museum of the château de Pau are supported by numerous partners, and especially by the various departments of its supervisory administration.

NATIONAL PARTNERS

For the French Ministry of Culture and Communication

- The Direction générale des patrimoines, Service des musées de France
- The Réunion des musées nationaux
- The Direction régionale des Affaires culturelles d'Aquitaine
- The Bibliothèque nationale de France
- The Musée national du Moyen-Âge
- The Musée national de la Renaissance



Its scientific activities bring it in regular contact with:

- The Université Michel de Montaigne (Bordeaux III)
- The Université de Pau et du Pays de l'Adour
- The Université de Caen
- The FRAMESPA laboratory , (Southern France and Spain: social history, CNRS – Toulouse II)
- The LAPRIL laboratory (Bordeaux III)
- The Société française des seiziémistes
- The Société de l'histoire du protestantisme français
- The Fondation Taylor (Paris)

REGIONAL AND LOCAL PARTNERS

- The Municipality of Pau
- The Pau-Pyrenees urban district council
- The Pyrenees-Atlantiques département council
- The Aquitaine regional council

PARTNER ASSOCIATIONS

- The Société des Amis du château de Pau
- The Société Henri IV
- The Société des sciences, lettres et arts de Pau et du Béarn
- The Académie de Béarn
- The Maison des Femmes du Hédas
- The Francas
- The MJC Berlioz
- "Le Méliès" art cinema
- Germéa

INTERNATIONAL PARTNERS

- Special superintendency for the historic, artistic and ethno-anthropological heritage for the museum centres of the city of Florence (Italy)
- The Medici Chapels museum (Italy)
- The Voltaire Foundation (Oxford)
- The Heinrich Mann Institute

The Société des Amis du château de Pau

The Société des Amis du château de Pau, set up in 1952, is an association governed by the French 1901 law. Its registered office is the Château de Pau. This organization of general interest is a member of the Fédération française des Sociétés d'Amis de musées, which groups 290 associations. It has a membership of over 450.



AIMS

- Enriching the national museum's collections through purchases or donations of works made in concert with the management of the national museum,
- Acting as a link between the national museum and a wide range of people and entities,
- Playing a part in applying the cultural policy of the national museum of the château de Pau: the Society backs up the museum in its cultural actions, exhibitions, symposiums, special events, etc. and deals with their promotion.

ACTIVITIES

Each year, the Société des Amis du château de Pau programmes a set of activities aimed at its members, but also open to all. Twice a year, it publishes a magazine written by specialists in history or history of art, and distributed in France and in other countries, together with a quarterly news magazine, *Le Petit Journal*, giving details of its activities and those of the national museum. It also proposes:

- Cycles of monthly conferences,
- Cultural trips in France and to other countries,
- Concerts: since 2009, its "musical matinees" have enabled young musicians who have won prizes in national and international competitions to perform at the château.

contact

M^{me} Marie-Geneviève Verdenal
President
Château de Pau - 64000 PAU
Tel.: +33 (0)5 59 82 38 10
Fax: +33 (0)5 59 82 95 95
marie-g.verdenal@neuf.fr
www.portailasso.com

the château de Pau
TODAY

The Société Henri IV



The Société Henri IV is an association governed by the French 1901 law. It was set up in 1993, following transformation of the Henri IV-89 association that dealt with commemoration ceremonies for the quatercentenary of Henri IV's accession to the throne. It has a current membership of about a hundred, in France and in other countries. From the start, the registered office of the Société Henri IV has been at national museum of the château de Pau, the birthplace of Henri de Navarre.

AIMS

- Studying, spreading knowledge and distributing information about the figure and the actions of a king, Henri IV (1553-1610),
- Organizing and backing all events of a scientific nature linked to Henri IV and his era,
- Coordinating and promoting events linked to Henri IV.

ACTIVITIES

Organizing symposiums and conferences, the Société Henri IV has developed a policy based on support for publication of documents covering symposiums and scientific works.

La Lettre de la Société Henri IV, a magazine issued twice a year and distributed to its members, libraries and archives departments, reports on scientific news in the field. Since 2001, it has published new articles and documents.

The Society played a part in setting up the *Henri IV, le règne interrompu* Web site put online by the National Celebrations in 2010. In that year, the Société Henri IV also played an essential role in coordination and promotion of events commemorating the quatercentenary of the assassination of Henri IV.

Standing committee members

Honorary President: Jean-Pierre Babelon

President: Jacques Perot

Vices-presidents:

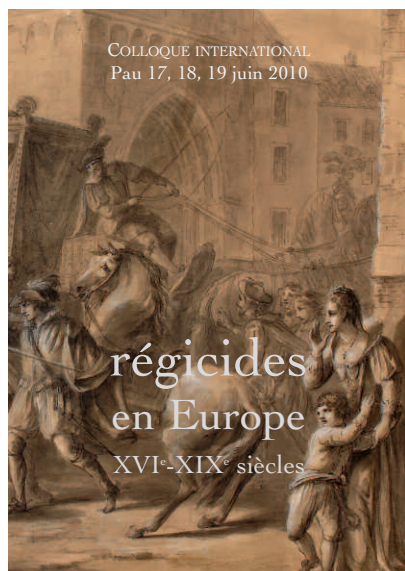
Bernard Barbiche and Yves-Marie Berce

General secretary: Philippe Chareyre

Assistant general secretary: Isabelle Pebay-Clottes

contact

Isabelle Pébay-Clottes,
Assistant general secretary
of the Society
Tel. : +33 (0)5 59 82 38 12
Fax : +33 (0)5 59 82 38 18
isabelle.pebay@culture.gouv.fr
www.societe-henri-iv.eu



the château de Pau
TODAY

a SERVICES
OFFER



Private use of areas

THE SYSTEM

The château, a monument and national museum in the heart of the Béarn, and birthplace of King Henri IV, proposes private use of some of its areas to organize quality events such as cocktails or dinners.

Such private use of areas is governed by a certain number of rules stemming from application of fire safety and anti-panic regulations for areas open to the public and aimed at ensuring the safety of people and property.

The safety of areas in private use in the museum is thus ensured by members of the château staff, whose numbers are determined in the light of the event concerned by the services.

The staff costs, which are to be met by the event organizer, are invoiced separately after the event had been held, on the basis of a statement of the hours actually worked.

An estimate can be drawn up on request.



THE AREAS

Salle des officiers de service

Cocktails, buffets, meals, conferences

Hosting capacity:

Cocktails and buffets (standing room): 80 persons

Conferences: 70 persons

Seating for meals: 40 persons

Charge: €1,500 exclusive of VAT (VAT 19.6%)*

Tarif : 1 500 € H.T. (TVA 19,6 %)*

Salle des cent couverts

Cocktails, buffets, meals, shows, conferences

Hosting capacity:

Cocktails and buffets (standing room): 180 persons

Shows, conferences: 160 persons

Seating for meals: 140 persons

Charge: €3,000 exclusive of VAT (VAT 19.6%)*

Salle des officiers de service and the salle des cent couverts

Cocktails, buffets, meals

Hosting capacity: 180 persons

Charge: €4,000 exclusive of VAT (VAT 19.6%)*

A fully equipped conference room (video-projection) can also be made available for organizers

Hosting capacity: 90 persons

contact

Virginie Arbouin,

Head of the public receptions
department

Tel.: +33 (0)5 59 82 38 25

Fax: +33 (0)5 59 82 38 18

virginie.arbouin@culture.gouv.fr

a SERVICES
OFFER

Privilege visits



It is possible to book a Privilege Visit of the collections, for a group, outside the opening hours for the general public. These services can be provided separately in the evenings (after 5:30 pm in winter and 6:30 pm in summer) or combined with private use of a room or rooms.

Accompanied by the museum's reception staff and guides, the groups are invited to find out about the history of the monument and the people who left their mark on the château. The staff costs are to be met by the organizer, and they are not included in the charges for privilege visits. They are invoiced separately after the event had been held, on the basis of a statement of the hours actually worked.

An estimate can be drawn up on request.

contact

Virginie Arbouin, Head of the public receptions department
Tel. : +33 (0)5 5982 38 25 – Fax: +33 (0)5 5982 38 18
virginie.arbouin@culture.gouv.fr

A visit to suit each type of visitor



The national museum of the château de Pau can provide its visitors with specific solutions to discover its permanent and temporary collections. From in-depth guided visits and conferences to a playful approach to the collections, the national museum guides can design and conduct visits to suit the expectations of various types of visitors: adults, school pupils, holiday centres, families, etc. The programmes for the visits and a list of the themes and subjects covered are available on the museum's Web site: www.museum-chateau-pau.fr, in the *A chacun sa visite* section.

contact

Information and bookings:
Olivier Pouvreau and **Alain Gouillardou**,
visitors' department
Tel. : +33 (0)5 5982 38 02/07 – Fax: +33 (0)5 5982 38 18
olivier.pouvreau@culture.gouv.fr
alain.gouillardou@culture.gouv.fr

The bookshop and boutique



Located inside the château, the boutique, which is managed by the Réunion des musées nationaux-Grand Palais, can provide visitors with gifts, jewellery, and reproductions of objects from national collections.

Articles ranging from stationery to effigies of Henri IV, via post-cards illustrating the collections, DVDs and CDs, are also on sale there.

A big specialized bookshop houses a selection of general works on history and history of arts, together with specific publications for the site: an Album of the château, a series of Petits cahiers, catalogues of temporary exhibitions, and also works stemming from the scientific activities carried out by the museum teams and their partners: reports on symposiums, joint works, etc.

Children can find a selection of books based on an amusing approach to that period of history and history of art, together with various games.



OPENING HOURS

The bookshop and boutique is open every day, including Sundays, from 9:30 to 11:45 am and from 2:00 to 5:15 pm.

contact

Anne-Sophie Gazeau,
Head of the boutique
RMN-GP bookshop
Tel./Fax: +33 (0)5 59 27 84 78
librairie-boutique.Pau@rmn.fr

a SERVICES
OFFER

Online resources

THE MUSEUM WEB SITE

A fully-fledged showcase for the château and its activities, the Web site is constantly being updated and enriched to provide an ever-increasing range of services in a world in which new technologies are taking on growing importance in cultural and educational fields.

After a partial graphic overhaul, its functionalities have gradually been enriched and its editorial line has been reviewed to provide the general public with a useful cultural and information distribution tool, with plenty for non-experts, about the works and the museum.

The museum Web site has about 53,000 visits a year, 20% of them by people in other countries. In 2010, Internet users from 60 countries went to the site at least once. Most of them are from French-speaking countries, but the Netherlands, Spain, Italy, Germany, Japan, the Russian Federation, the UK, Brazil, etc., are also strongly represented.

www.musee-chateau-pau.fr

THE WEB SITES DEDICATED TO OUR MAIN EXHIBITIONS

Since 2010, the museum has set up a dedicated Web site for each exhibition, containing useful information (opening hours, charges, access, etc.) together with quality cultural content (synopses in images of the various rooms, details on works, etc.).

<http://henriiv2010.perso.sfr.fr> put online for the exhibition: "*Paris vaut bien une messe!*" 1610: *hommage des Médicis à Henri IV, roi de France et de Navarre.*

Coming shortly: *Gaston Fébus, (1331-1391) Prince soleil, Armas, amors e cassa.*



THE VIRTUAL EXHIBITION SITES

Afin de prolonger et de diffuser plus largement certaines expositions temporaires organisées au Musée national du château de Pau, un portail d'expositions virtuelles a vu le jour en 2005.

To extend some temporary exhibitions organized in the national museum of the château de Pau, and make them available to a wider audience, a virtual exhibitions portal was set up in 2005. The public are invited to have another look at an exhibition they liked especially, with new extensions: original scenarios, in-depth examinations and documentary and scientific updates, together with teaching and amusing approaches that multiply the reading levels. There are currently three sites:

Didier Sorbé. Mémoire de monuments (2005): <http://mncp.gv-hd.com/>

Avec panache (2007): <http://mncp.gv-hd.com/>

Eugène Devéria (2011): <http://deveria.mncp.expomuseo.org>

This project, backed by the services of the Aquitaine Direction Régionale des Affaires Culturelles, was made possible thanks to the support of the Aquitaine regional council, which adopted the project immediately via the Banque Numérique du Savoir d'Aquitaine (BNSA). It also benefited from backing by the Pau-Pyrénées urban district council, which supplied part of the technical infrastructure. It was brought about through partnerships with the companies that set about creating the tool, Be Group and DIS.

ONLINE PUBLICATIONS OF DESCRIPTIVE CATALOGUES OF COLLECTIONS (RÉUNION DES MUSÉES NATIONAUX-GRAND-PALAIS) :

A pioneer in the media, the Rmn-Grand Palais takes pride of place in the field of editing scientific catalogues online. These catalogues form a continuation to the "scientific" publications that constitute the memory of the public collections. The publications provide specialists with all the information they could previously find in printed catalogues, whether it takes the form of synopses, descriptions or inventories.

Their presence online makes these scientific publications available for a wider audience. They are complete research tools that can be consulted by all free of charge.

Drawings (2007): www.dessinsdepau.fr

Paintings (scheduled for 2012-2013)

contact

Anthony Pinasson,
Head of development

Tel.: +33 (0)5 59 82 38 32

Fax: +33 (0)5 59 82 38 18

anthony.pinasson@culture.gouv.fr

a SERVICES
OFFER





THE NEWSLETTER

The national museum of the château de Pau publishes an electronic *Newsletter* covering forthcoming exhibitions and special events, the château and details of its collections, etc.

SUBSCRIBING TO THE NEWSLETTER

To help to respect the environment, the national museum of the château de Pau now gives priority to transmission of its programmes through electronic channels.

To receive our newsletter on a regular basis, and find out more about our activities, you can subscribe to the newsletter by sending an email to anthony.pinasson@culture.gouv.fr or returning the reply coupon below.

PERSONAL INFORMATIONS

First name*

Name*

Email address*

PREFERRED FORMAT select a format for your emails*

HTML (recommended) Text (simple and universal)

CENTRES OF INTEREST :

- News of the museum (events concerning the museum and the collections)
- Offer for Young People
- Offer for the disabled and the Social Fields
- Offer for people living outside France
- Cultural tourism offer
- Educational, artistic and cultural programmes
- La programmation éducative, artistique et culturelle
- Scientific programmes (symposiums, one-day study sessions, etc.)
- Sponsoring, mentoring and/or private use of areas
- Special events organized at the museum

* These boxes must be filled in)

contact

Anthony Pinasson,
Head of development
Tel. : +33 (0)5 59 82 38 32
Fax : +33 (0)5 59 82 38 18
anthony.pinasson@culture.gouv.fr

a SERVICES
OFFER



Useful information

ADDRESS

National museum of the château de Pau

Rue du Château – 64000 PAU

Tel.: + 33 (0)5 5982 38 00

Fax: + 33 (0)5 5982 38 18

www.musee-chateau-pau.fr



OPENING HOURS*

Open every day except 1 January, 1 May and 25 December

Off-peak season: 9:30 to 11:45 am and 2:00 to 5:00 pm

Peak season (15 June to 15 September): 9:30 am to 12:30 pm and 1:30 to 5:45 pm

* Subject to modifications

VISITS

Guided visits only, in French, Spanish* and English*, specific visits* in French.

For groups, prior bookings are strongly recommended

* For prior bookings only

2013 PRICES*

Individual visitors: Full rate: €6, Reduced rate: €4.50

Groups: €5 per person (group of at least 10 persons paying the entrance fee)

Free entry for EU residents aged under 26 and for all visitors, on the first Sunday of each month.

* Subject to modifications

Advance sales of multiple tickets for museum visits.

The entrance tickets for the museum's permanent collections and temporary exhibitions enable users to avoid entrance queues (special prices, minimum purchase 20 tickets).

They must be ordered from Musée & Compagnie and they are delivered within 48 hours:

Musée & Compagnie Mondays to Fridays

9:00 am to 12:30 pm and 1:30 to 5:00 pm

254/256 Rue de Bercy - 75577 Paris cedex 12 - France

Tel. 01 40 13 49 13 - Fax. 01 40 13 49 11

museecie@rmn.fr

www.rmn.fr/billetterie

a SERVICES
OFFER



ACCESS

The museum is 500 m away from Pau station, access by free funicular railway.

Coach park: Place de la Monnaie

Car parks: Place de Verdun, Clemenceau and Aragon car parks

Idelis Vélo Bicycle Stations: Place de la Monnaie, Place Clemenceau

Airline flights: 9 flights a day between Paris and Pau

(flight time 1 hour 15 minutes) - 3 flights a day to and from Lyon

Links with London, Amsterdam, and Dublin

Trains: TGV: Paris - Bordeaux - Lourdes line

Intercity trains to and from Toulouse

Motorway links: A64 (Bayonne-Toulouse- Montpellier); A65 (Pau-Bordeaux)



a SERVICES
OFFER



Contacts

NATIONAL MUSEUM

MANAGEMENT

Director: **Paul Mironneau**, curator general of the heritage

Secretariat: **Myriem Dauga**

Tel.: 05 59 82 38 12 - Fax: 05 59 82 38 18

paul.mironneau@culture.gouv.fr

GENERAL SECRETARIAT

General secretary: **Cécile Latour**

Secretariat: **Jean-Jacques Ducasse** and **Myriem Dauga**

Tel.: + 33 (0)5 59 82 38 00 - Fax: 05 59 82 38 18

cecile.latour@culture.gouv.fr

jean-jacques.ducasse@culture.gouv.fr

myriem.dauga@culture.gouv.fr

CURATORSHIP

Isabelle Pébay-Clottes, Head curator of the heritage

Tel. + 33 (0)5 59 82 38 26 - Fax. + 33 (0)5 59 82 38 18 - isabelle.pebay@culture.gouv.fr

Bertrand Ducourau, Head curator of the heritage

Tel. + 33 (0)5 59 82 38 38 - Fax. + 33 (0)5 59 82 38 18 - bertrand.ducourau@culture.gouv.fr

MANAGEMENT OF WORKS OF ART

François Gombert, art technician

Tel. + 33 (0)5 59 82 38 23 - Fax. + 33 (0)5 59 82 38 18 - francois.gombert@culture.gouv.fr

SCIENTIFIC DOCUMENTATION

Anne Moufannine, secretary for documentation

Tel. + 33 (0)5 59 82 38 05 - Fax. + 33 (0)5 59 82 38 18 - anne.moufannine@culture.gouv.fr

RECEPTION, VISITORS AND DEVELOPMENT DEPARTEMENT

Communication, special events and media coverage

Virginie Arbouin, Engineer in cultural services, head of the visitors and communication department

Tel. + 33 (0)5 59 82 38 25 - Fax. + 33 (0)5 59 82 38 18 - virginie.arbouin@culture.gouv.fr

Development, NICTs and Support

Anthony Pinasson, Engineer in cultural services, head of development

Tel. + 33 (0)5 59 82 38 32 - Fax. + 33 (0)5 59 82 38 18 - anthony.pinasson@culture.gouv.fr

NATIONAL PROPERTY

MANAGEMENT

Director: **Philippe Gisclard**, architect for French historic buildings, curator of the estate

Secretariat: **Christine Saurat**, **Gérard Blain**

Tel. 05 59 27 42 08 Fax: 05 59 40 69 36

philippe.gisclard@culture.gouv.fr

Gardens department

Benoit Laborde, Head gardener - Tel. 05 59 98 60 91 - benoit.laborde@culture.gouv.fr

Reception and supervision department

Thierry Barratine, technician in cultural services - Tel. 05 59 98 60 95 - thierry.barratine@culture.gouv.fr

HIM